

Installation manual

for

Moe's Suzuki Service's trigger wheel adapter.

*Fits mk2/3 swift GTi.

The installation requires some tools and some mechanical skills.

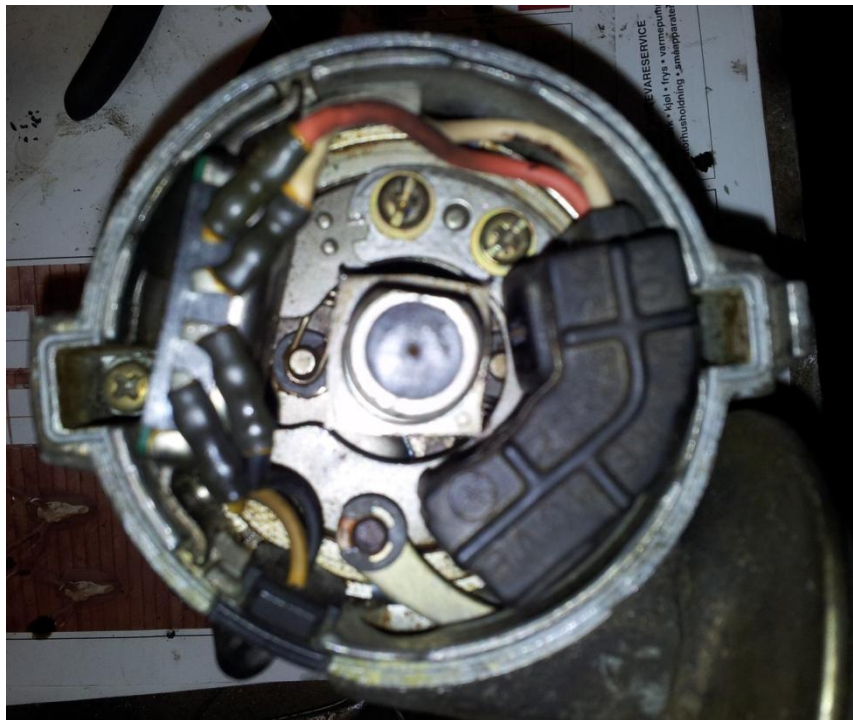
About the kit:

The kit includes one custom trigger wheel.

Some of the pictures are not 100% correct, due to several attempts of figuring all this out. Please take contact if you got questions.

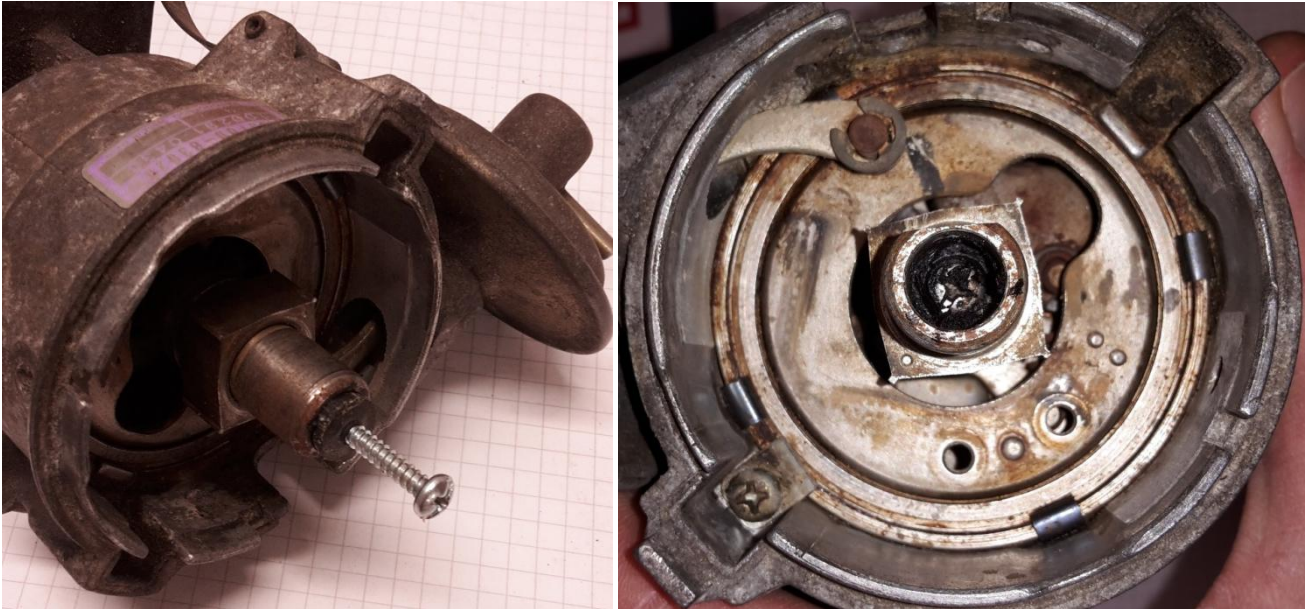
Please read the whole installation manual before starting the conversion.

Step 1:



Remove the electrical parts from the Samurai distributor using a phillips screw driver.

Step 2:



Remove the plastic plug, using a wood screw or similar, to access the screw that holds the two distributor axes together.

Step 3:



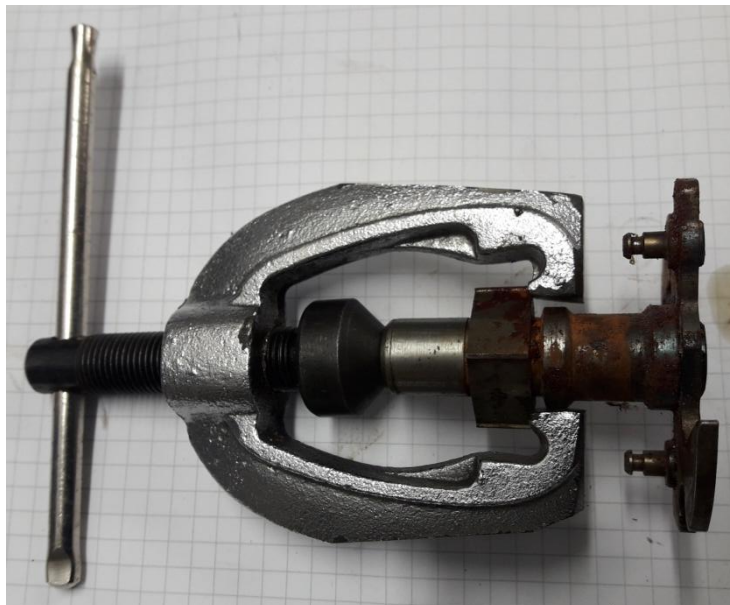
Remove the vacuum advance and vacuum advance plate, three screws and a clips.

Step 4:



Remove the springs and weights, and then take out the upper distributor axle.
The distributor housing should now be "empty".

Step 5:



Remove the trigger wheel from the upper axle, using a gear puller.

Step 6:



install the upper axle, and weld it to the lower axle.

Step 7:

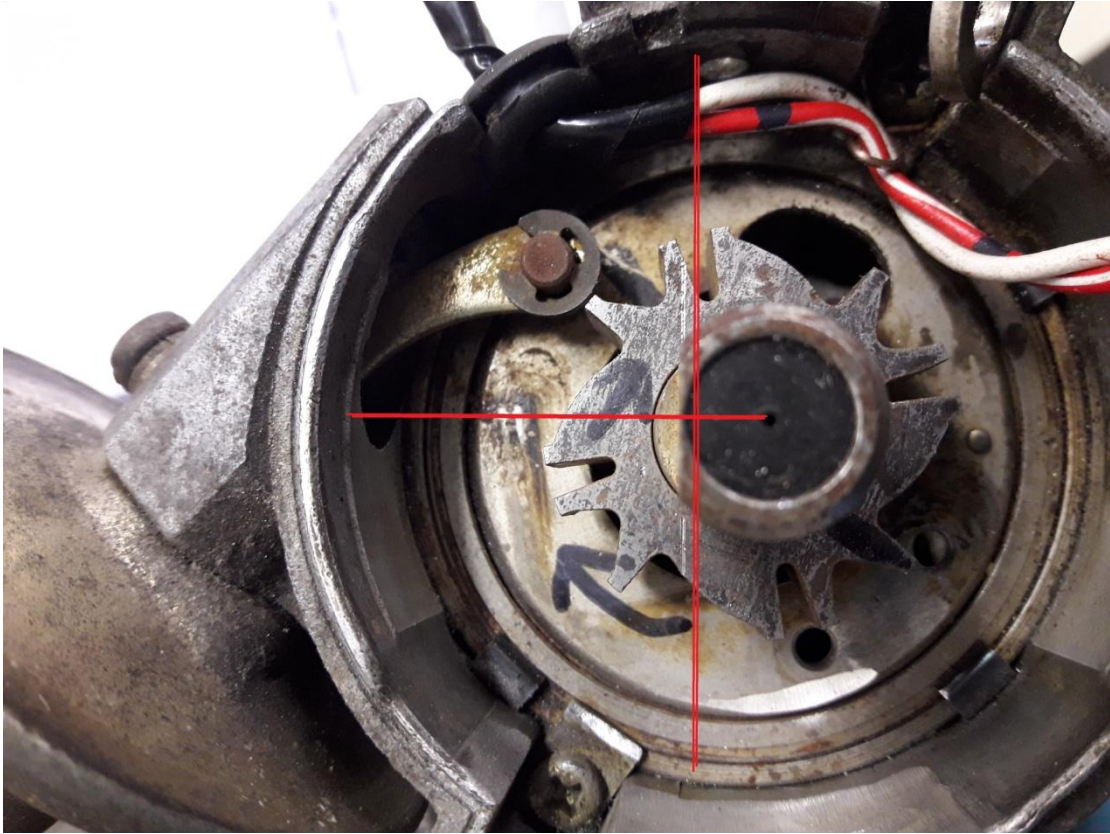


Reinstall the vacuum advance and vacuum advance plate, three screws and a clips.

You don't need the vacuum advance, as there are no vacuum advance on mk 2/3, but I found it usefull to use it manually to fine tune the timing setup if nessesary. Make the hole longer, and you are easily able to make adjustments on the timing setup. You can do this your own way if you want.

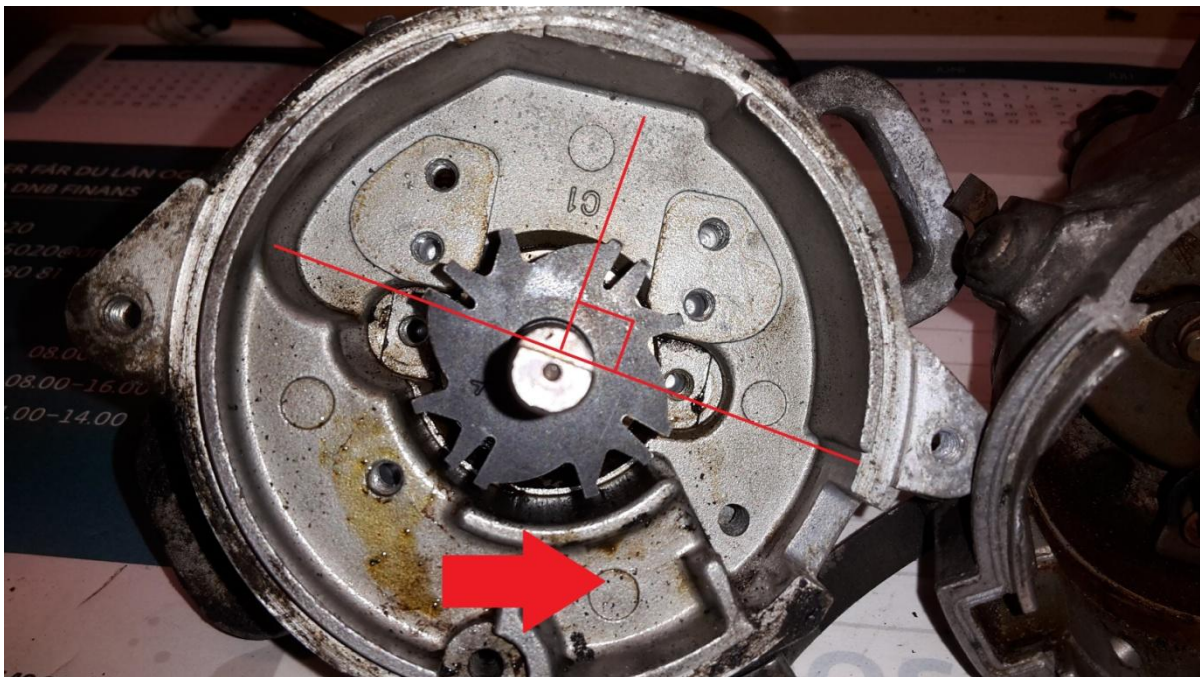


Step 8:



(Samurai distributor, turns clockwise)

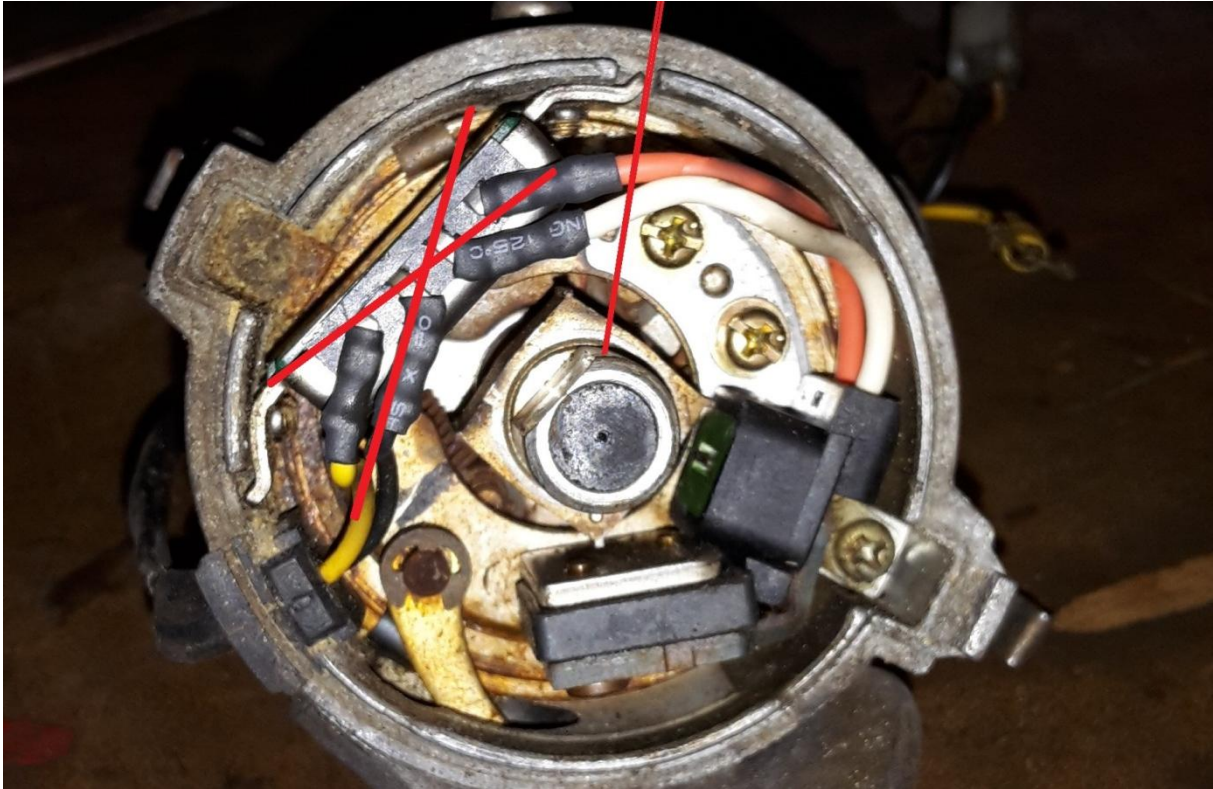
Make sure you got the trigger wheel turning the right way. Then, when you are sure the trigger wheel are properly aligned of the rotor groove, press the trigger wheel carefully on the distributor axle using a workshop press or similar. It is crucial that the alignment is the same as the original swift distributor, if not, you will get starting issues. Your Swift distributor is perfect aligned (Mine in the is not 100 % correct)



(Swift distributor, turns anti-clockwise)

(My Swift distributor is not 100 % correct, be sure to compare with your own Swift distributor)

Step 9:



Take your previously removed electrical parts from your samurai distributor, and cut the two wires as shown in the pictures. Solder on longer wires on the end of the red and white wires.



Drill the holes larger in the signal pickup mounting plate, to be able to adjust the air gap between the signal pickup coil and the trigger wheel. it should be the same as your Swift's.

Step 10:



Install the signal pickup coil and finish up the wiring. Remember the connector for the distributor.

Good luck with your Samurai project!

(We won't be financially responsible if there should happen anything with the angle drive kit or engine components. Of course we'll try to help you out with tech or parts if we can.)

Thanks!

Best Regards
from
Moe's Suzuki Service